



LTE ANTENNA

Antenna LTE Screw Mount G003,
2.5 dBi, SMA(m), RG174/3m

AO-ALTE-G003LS

SECTRON company offers a wide portfolio of LTE antennas with various versions differing in shape, level of gain and manner of attachment.

SECTRON guarantees a compatible connection between an antenna and all antenna adaptors produced by SECTRON.

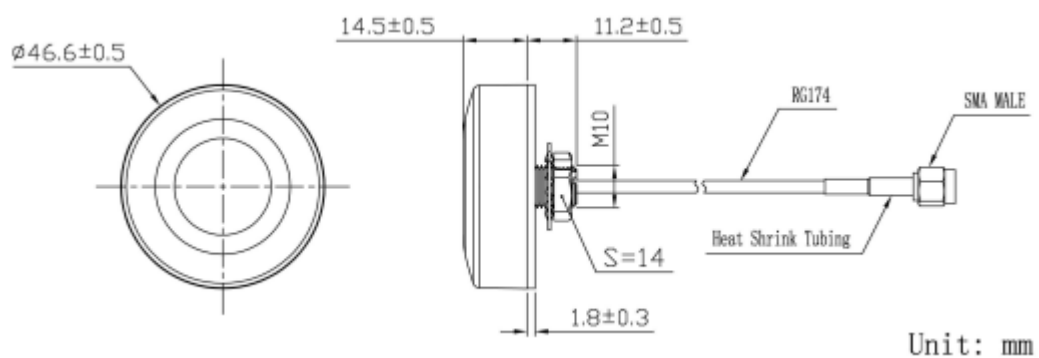
BENEFITS

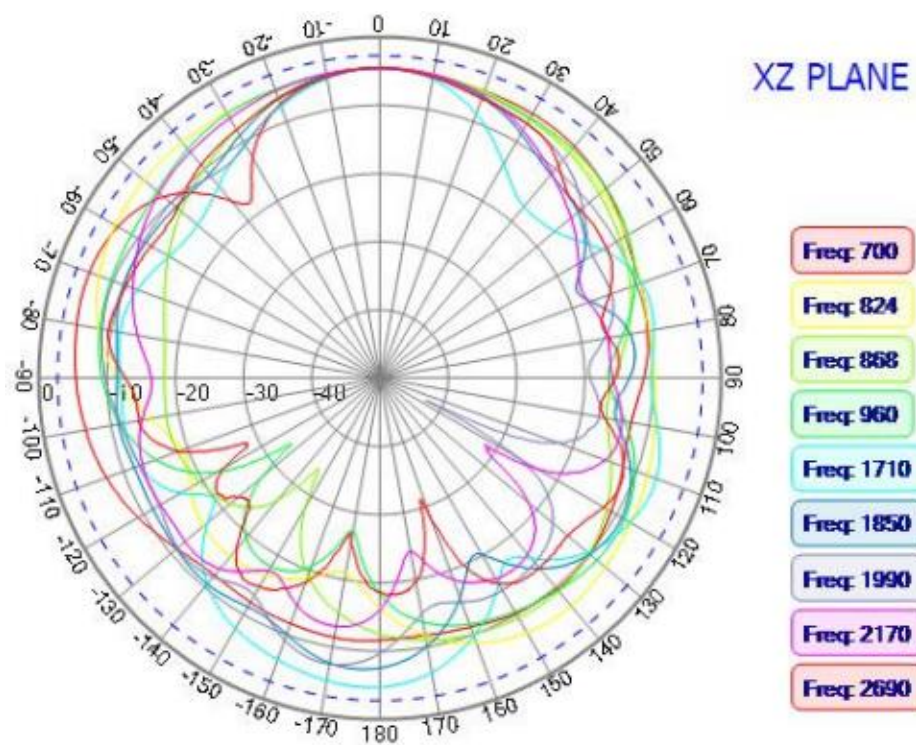
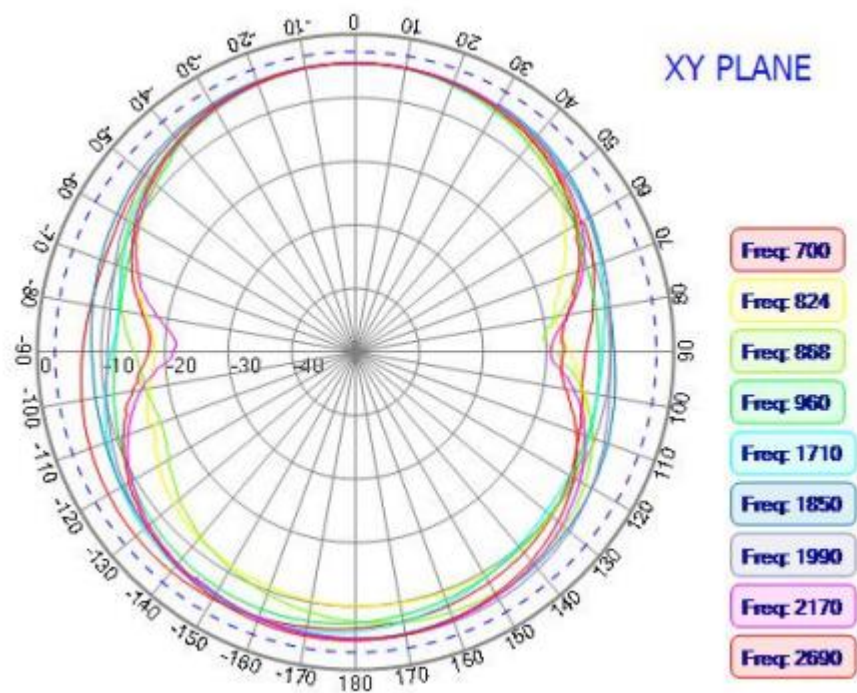
- High Gain
- Low VSWR

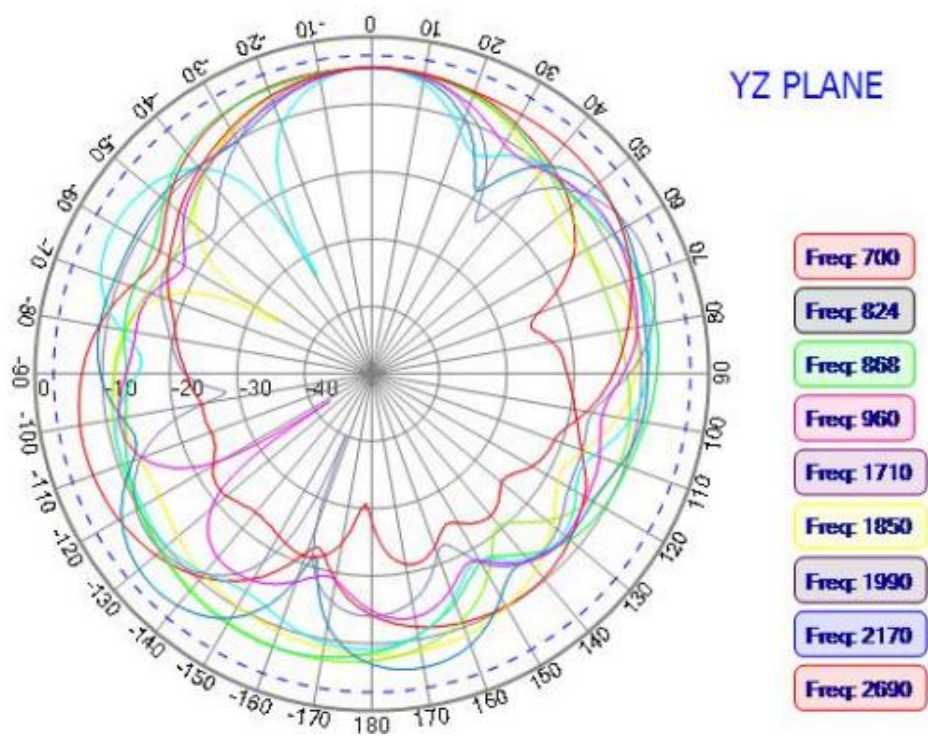


Technology	LTE
Frequency bands	698-960/1561-1602/1710-2690/2400-2483.5/4900-5825 MHz
Gain	2.5 dBi
LNA Gain	28 dB
VSWR	<1.5:1
Impedance	50 Ohm
Directivity	Omnidirectional
Beam angle	H 360° V 30°
Polarization	RHCP/Linear
Maximum input power	-
Power voltage	3 – 5 V
Dimensions	Ø46.6 x 25.7 mm
Weight	63.28 g
Operating temperature	-40 to +85 °C
Execution	External
Method of attachment	Screw Mount
Cable type	RG174/U
The cable length	3 m
Connector type	SMA (m)
Certification	RoHS
Material	ABS
IP Code	IP67

DRAWING







VARIANTS

AO-ALTE-G003LS

Different connector variants or cable lengths are available on request.

CONTACTS

SECTRON s.r.o. Josefa Šavla 1271/12
709 00 Ostrava 9, Czech Republic

WWW.SECTRON.CZ
Tel.: +420 556 621 020