



# WLAN/BLUETOOTH ANTENNA

## Antenna 0 dBi build MCX 150mm

AW-A24G-2M150

SECTRON company offers a wide portfolio of WLAN/Bluetooth antennas with various versions differing in shape, level of gain and manner of attachment. SECTRON guarantees a compatible connection between an antenna and all antenna adaptors produced by SECTRON.

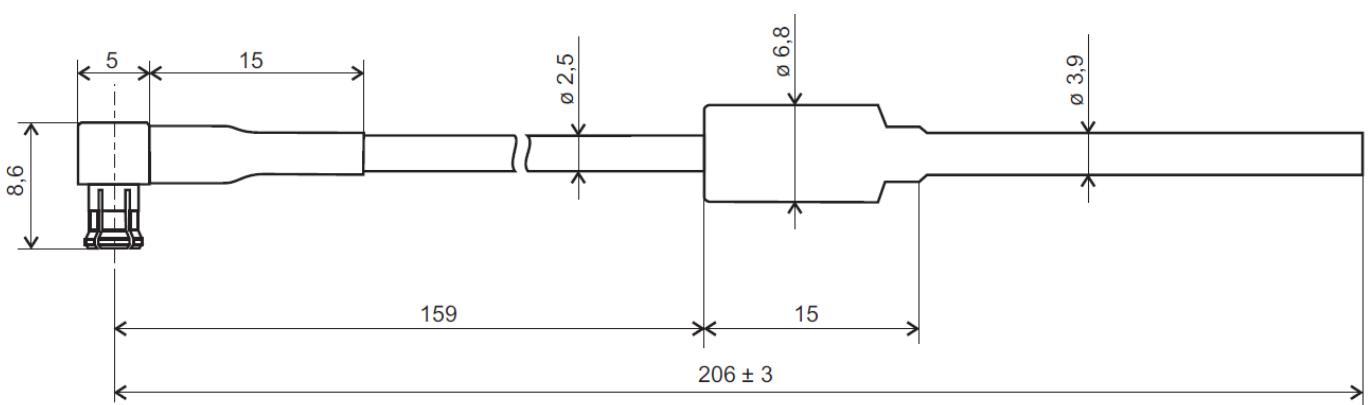


### BENEFITS

- Low VSWR
- Minimalistic dimension
- Flexible

Technology	WLAN/Bluetooth
Frequency bands	2.4 GHz
Bandwidth	-
Gain	0 dBi
VSWR	<1.2:1
Impedance	50 Ohm
Directivity	Omnidirectional
Beam angle	H 360° V 30°
Polarization	Linear
Maximum input power	1 W
Power voltage	-
Dimensions	8.6 x 6.8 x 206 mm
Weight	5.67 g
Operating temperature	-30 to +85 °C
Execution	Internal
Method of attachment	Connector mount
Cable type	RG316
The cable length	159 mm
Connector type	MCX(m) 90°

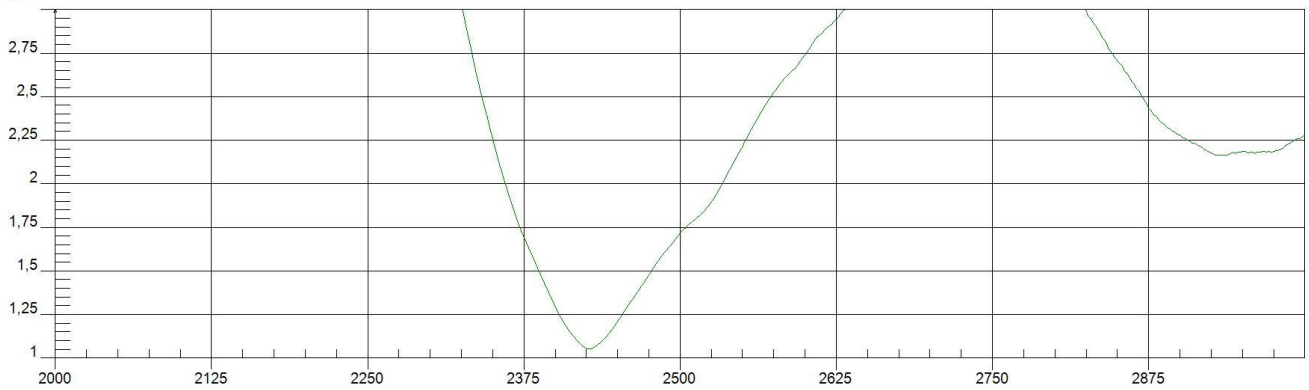
DRAWING



UNIT: mm

VSWR  
AW-A24G-2M150

VSWR



Frequency(2000 - 3000 MHz)

Resolution: 521

Cal: ON

Date: 2020/11/13

Time: 09:24

IIM: OFF

Keysight

SN: CN0132000230

## VARIANTS

Different connector variants or cable lengths are available on request.

## CONTACTS

SECTRON s.r.o. Josefa Šavla 1271/12  
709 00 Ostrava 9, Czech Republic

WWW.SECTRON.CZ  
Tel.: +420 556 621 020