



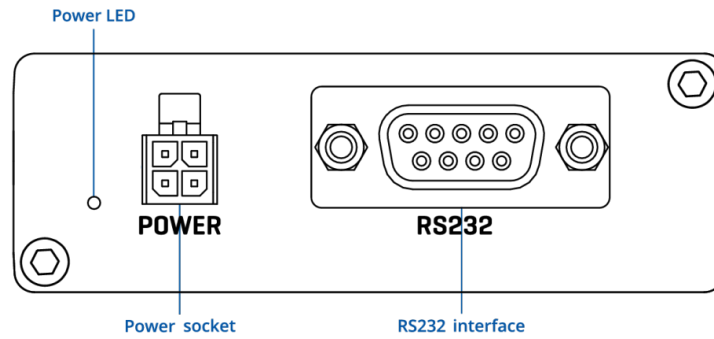
# TRM142

v1.0

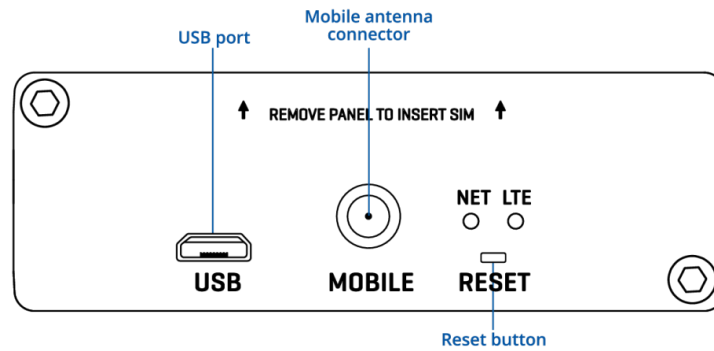


## HARDWARE

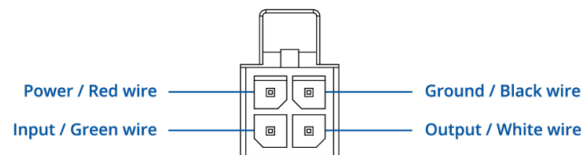
### FRONT VIEW



### BACK VIEW



### POWER SOCKET PINOUT



## FEATURES

### Mobile

|                      |   |
|----------------------|---|
| <b>Mobile module</b> | 4G LTE FDD up to 150 DL/50 UL Mbps, 4G LTE TDD up to 130 DL/30 UL Mbps, 3G HSPA+ up to 21 DL Mbps, 3G HSUPA up to 5.76 UL Mbps, 3G WCDMA up to 384 DL/384 UL kbps, 2G EDGE up to 236.8 DL/236.8 UL kbps, 2G GPRS up to 85.6 DL/85.6 UL kbps |
| <b>3GPP Release</b>  | Release 9   |

### Power

|                            |  |
|----------------------------|--|
| <b>Connector</b>           | 1 x 4-pin industrial DC power socket   |
| <b>Input voltage range</b> | 9 - 30 VDC, 4-pin: overvoltage protection, reverse polarity protection, surge protection |
| <b>Power consumption</b>   | Idle: < 1 W, Max: < 5 W  |

### Physical Interfaces

|                    |   |
|--------------------|---|
| <b>Status LEDs</b> | 1 x Power LED, 1 x Network LED, 1 x Mobile LED        |
| <b>SIM</b>         | 1 x SIM slot (Mini SIM – 2FF), 1.8 V/3 V              |
| <b>Power</b>       | 1 x 4-pin power connector                             |
| <b>Antennas</b>    | 1 x SMA for Mobile                                    |
| <b>USB</b>         | 1 x Virtual network interface via micro USB           |
| <b>RS232</b>       | 1 x DB9 connector, RS232 (with RTS, CTS flow control) |
| <b>Reset</b>       | Reboot/User default reset/Factory reset button        |

### Physical Specification

|                               |   |
|-------------------------------|---|
| <b>Casing material</b>        | Aluminium housing   |
| <b>Dimensions (W x H x D)</b> | 75.9 x 25 x 74.5 mm   |
| <b>Weight</b>                 | 135 g   |
| <b>Mounting options</b>       | DIN rail, wall mount, flat surface (all require additional kit) |

### Operating Environment

|                                  |                           |
|----------------------------------|---------------------------|
| <b>Operating temperature</b>     | -40 °C to 75 °C           |
| <b>Operating humidity</b>        | 10% to 90% non-condensing |
| <b>Ingress Protection Rating</b> | IP30                      |

**Network**

|                            |   |
|----------------------------|---|
| <b>Management Software</b> | Windows Connection Manager, Modem Manager (Linux)     |
| <b>USB Serial Driver</b>   | Windows 7/8/8.1/10/11,Linux 2.6~6.3, Android 4.x ~ 13 |
| <b>GNSS Driver</b>         | Android 4.x ~ 13                                      |
| <b>RIL Driver</b>          | Android 4.x ~ 13                                      |
| <b>NDIS Driver</b>         | Windows 7/8/8.1/10                                    |

**Regulatory & Type Approvals**

|                   |                                    |
|-------------------|------------------------------------|
| <b>Regulatory</b> | CE, UKCA, CB, RCM, EAC, UCRF, WEEE |
|-------------------|------------------------------------|

## ORDERING

### STANDARD PACKAGE\*



**TRM142 MODEM**



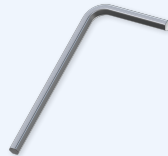
**9W PSU**



**1 X MOBILE SMA ANTENNA (MAGNET, SMA MALE)**



**MICRO-USB CABLE (0.8M)**



**1 X HEX KEY**



**QSG (QUICK START GUIDE)**

- TRM200
- [1x Mobile antenna \(swivel, SMA male\)](#)
- [Micro-USB cable \(0.8 m\)](#)
- 1x hex key
- QSG (Quick Start Guide)
- Packaging box

\*Standard package contents may differ based on standard order codes.

For more information on all available packaging options – please [contact us](#) directly.

### CLASSIFICATION CODES

**HS Code:** 851762

**HTS:** 8517.62.00

## AVAILABLE VERSIONS

|   |   |   |
|---|---|---|
| TRM200 0*****<br>EMEA <sup>1</sup> , Thailand, Australia, New Zealand | <b>4G (LTE-FDD):</b> B1, B3, B5, B7, B8, B20, B28<br><b>4G (LTE-TDD):</b> B38, B40, B41<br><b>3G:</b> B1, B8<br><b>2G:</b> B3, B8 | TRM200000000 / Standard package<br>TRM200000200 / Mass packing code |
|---|---|---|

The price and lead-times for region (operator) specific versions may vary. For more information please [contact us](#).

1 - Regional availability - excluding Russia, Belarus & Iran

## TRM142 SPATIAL MEASUREMENTS

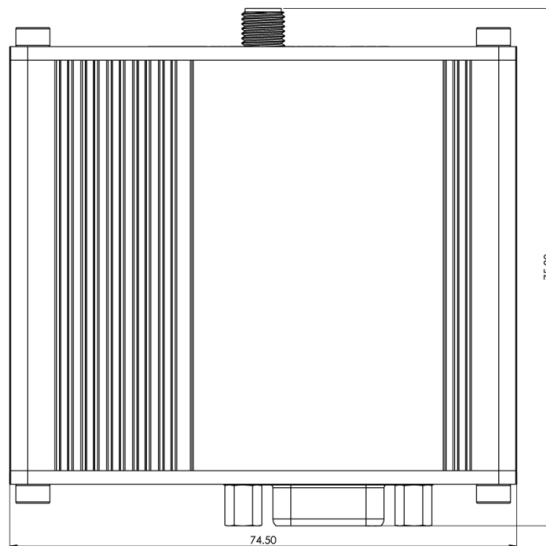
## PHYSICAL SPECIFICATION

|                                    |                     |
|------------------------------------|---------------------|
| <b>Device housing (W x H x D)*</b> | 74.5 x 25 x 64.5 mm |
| <b>Box (W x H x D):</b>            | 173 x 148 x 71 mm   |

\*Housing measurements are presented without antenna connectors and screws; for measurements of other device elements look to the sections below.

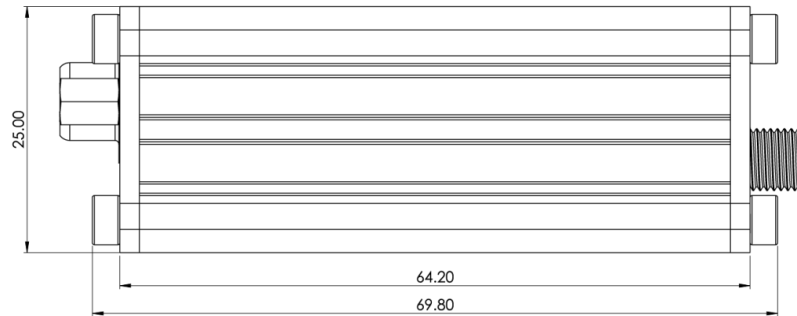
## TOP VIEW

The figure below depicts the measurements of device and its components as seen from the top:



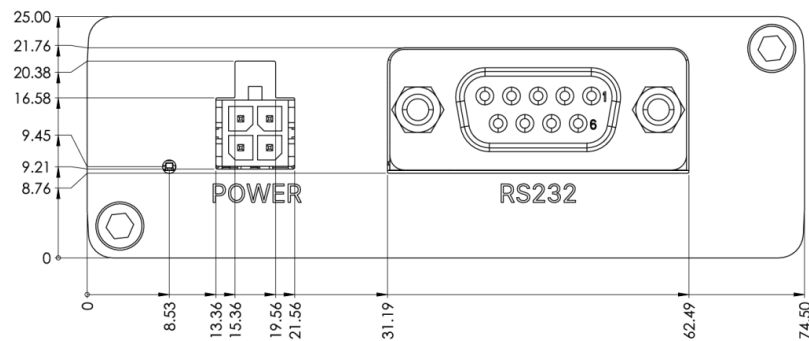
### RIGHT VIEW

The figure below depicts the measurements of device and its components as seen from the right side:



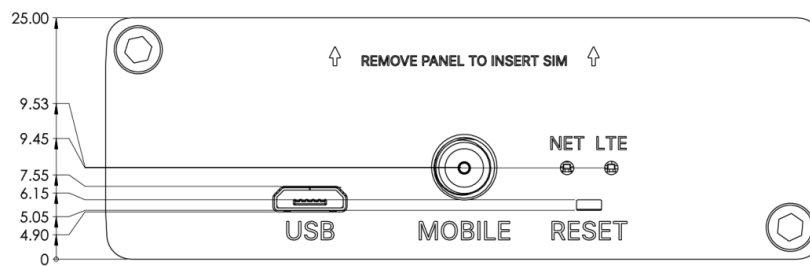
### FRONT VIEW

The figure below depicts the measurements of device and its components as seen from the front panel side:



### REAR VIEW

The figure below depicts the measurements of device and its components as seen from the back panel side:



### MOUNTING SPACE REQUIREMENTS

The figure below depicts an approximation of the device's dimensions when cables and antennas are attached:

