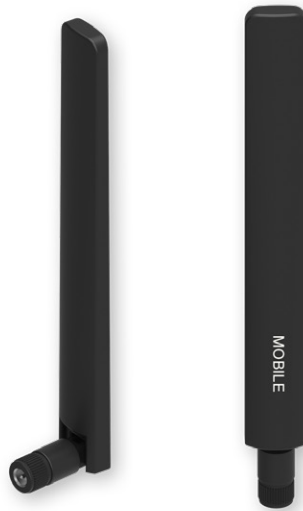


5G MOBILE SMA ANTENNA



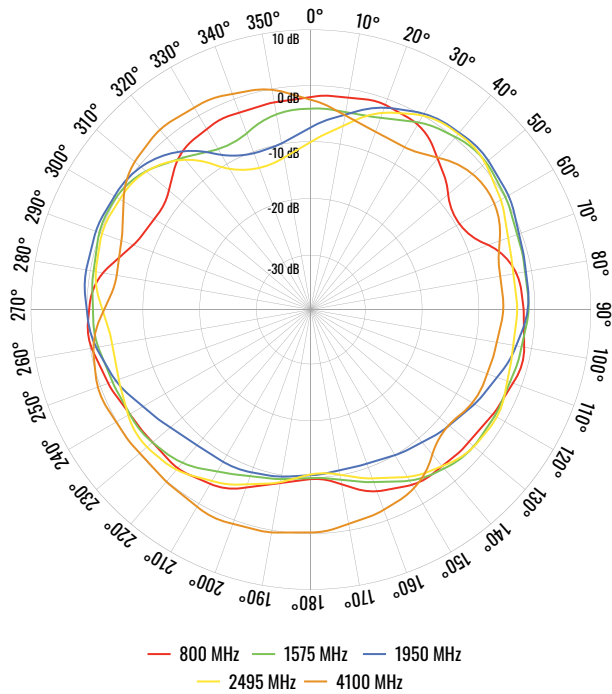
Mechanical/Environmental

Frequency range	617 ~ 960, 1410 ~ 1610, 1710 ~ 2690, 3300 ~ 7125 MHz
Polarization	Linear (vertical)
Gain	4.5 dBi
V.S.W.R	3.0
Impedance	50 Ω
Connector type	SMA Male
Operating temperature	-40 °C ~ +85 °C
IP rating	IP33
RoHS compliant	✓
Weight	24 g

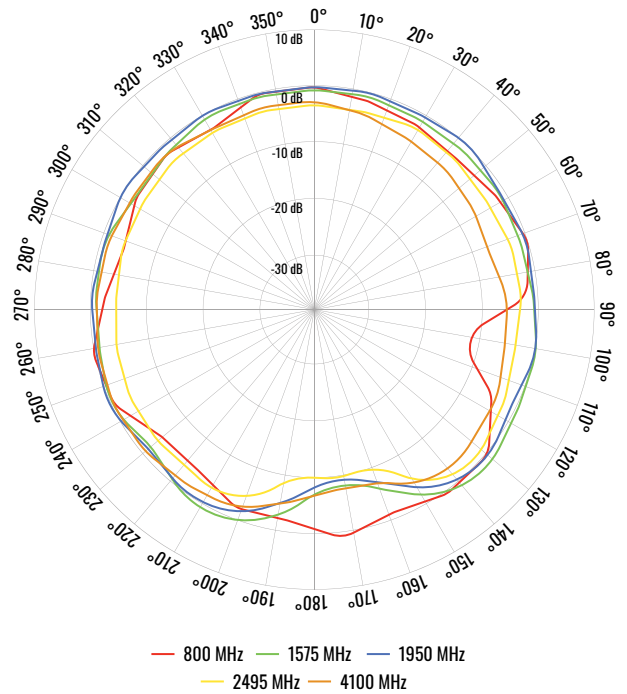
Radiation patterns

Mobile - Antenna

ELEVATION



AZIMUTH



Spatial measurements

