



GSM/GPS ANTENNA

Antenna GSM/GPS Adhesive PUK,
GSM/SMA-RP (f pin), GPS/SMA(m),
RG174/5m

AO-AKOM-30SSRP

SECTRON company offers a wide portfolio of GSM/GPS antennas with various versions differing in shape, level of gain and manner of attachment. SECTRON guarantees a compatible connection between an antenna and all antenna adaptors produced by SECTRON.



BENEFITS

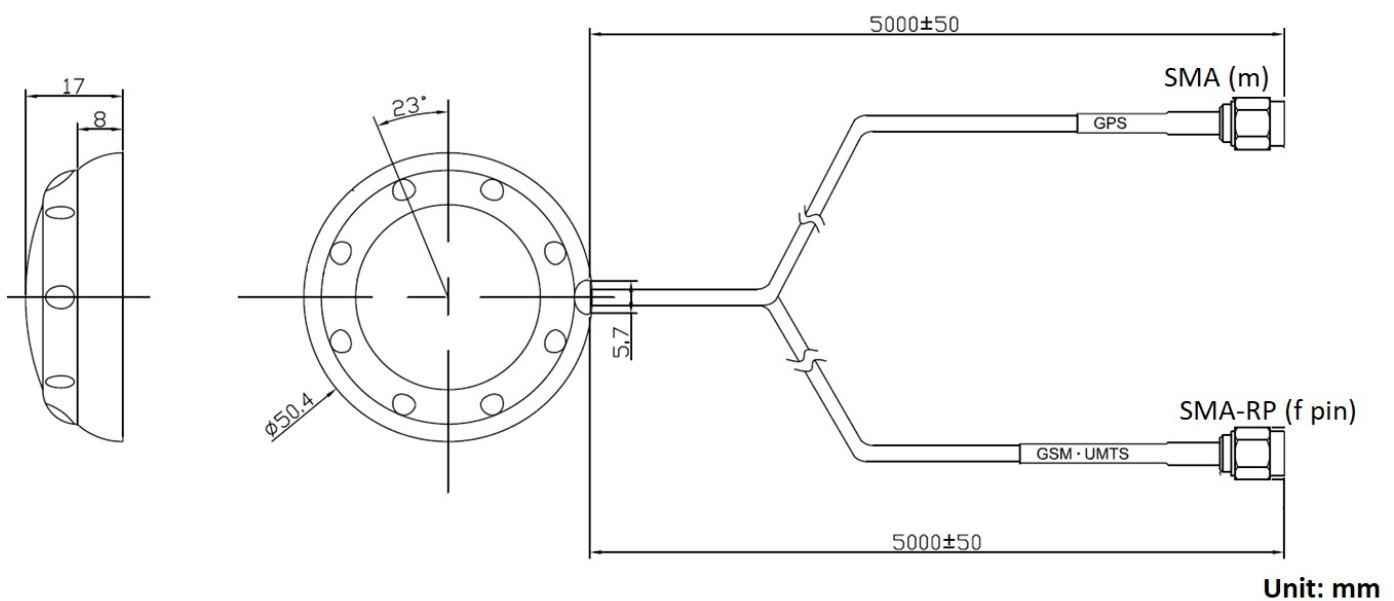
- Easy installation
- Low VSWR

FEATURES

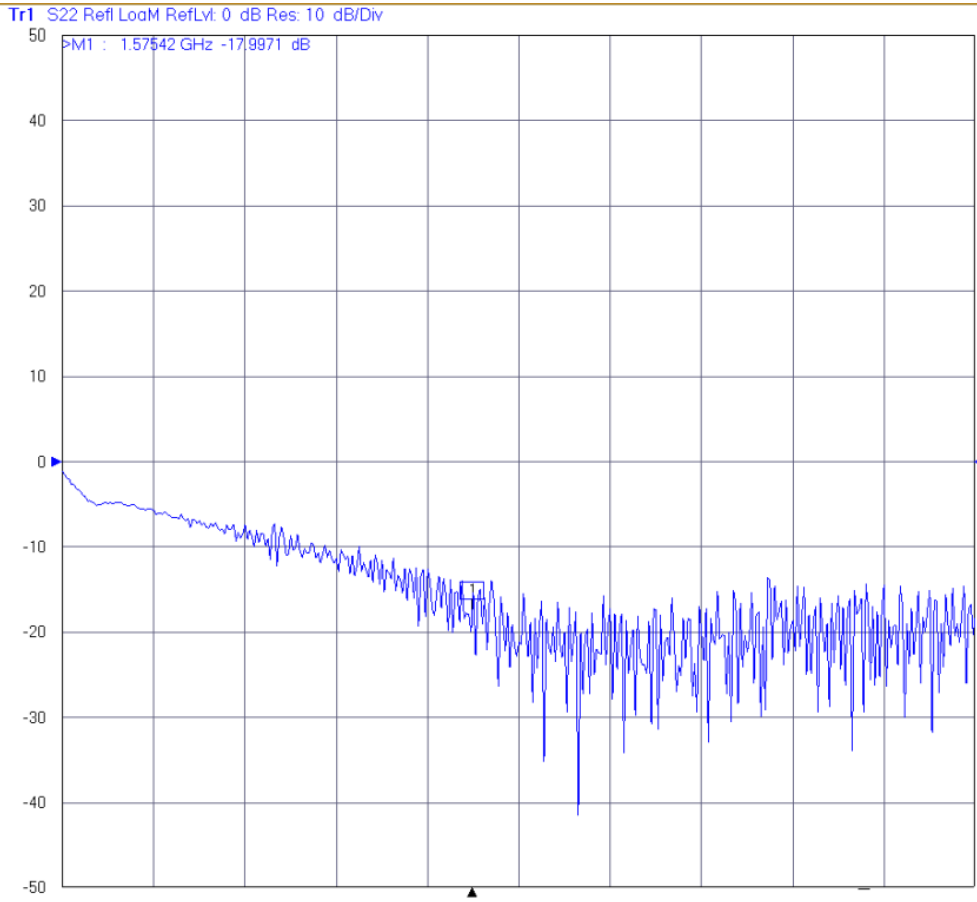
AO-AKOM-30SSRP

| | |
|-----------------------|------------------------------|
| Technology | GSM, GPS |
| Frequency bands | 900, 1800, 2100, 1575.42 MHz |
| Bandwidth | - |
| Gain | 0, 30 dBi |
| VSWR | <2.0:1 |
| Impedance | 50 Ohm |
| Directivity | Omnidirectional |
| Beam angle | H 360° V 30° |
| Polarization | Linear, R.H.C.P. |
| Maximum input power | 10 W |
| Power voltage | 2.5 - 5.5 V DC |
| Dimensions | ∅ 50.4 x 17 mm |
| Weight | 138.52 g |
| Operating temperature | -30 to +90 °C |
| Execution | External |
| Method of attachment | Adhesive |
| Cable type | 2 x RG174/U |
| The cable length | 2 x 5 m |
| Connector type | SMA-RP(f pin)/SMA(m) |

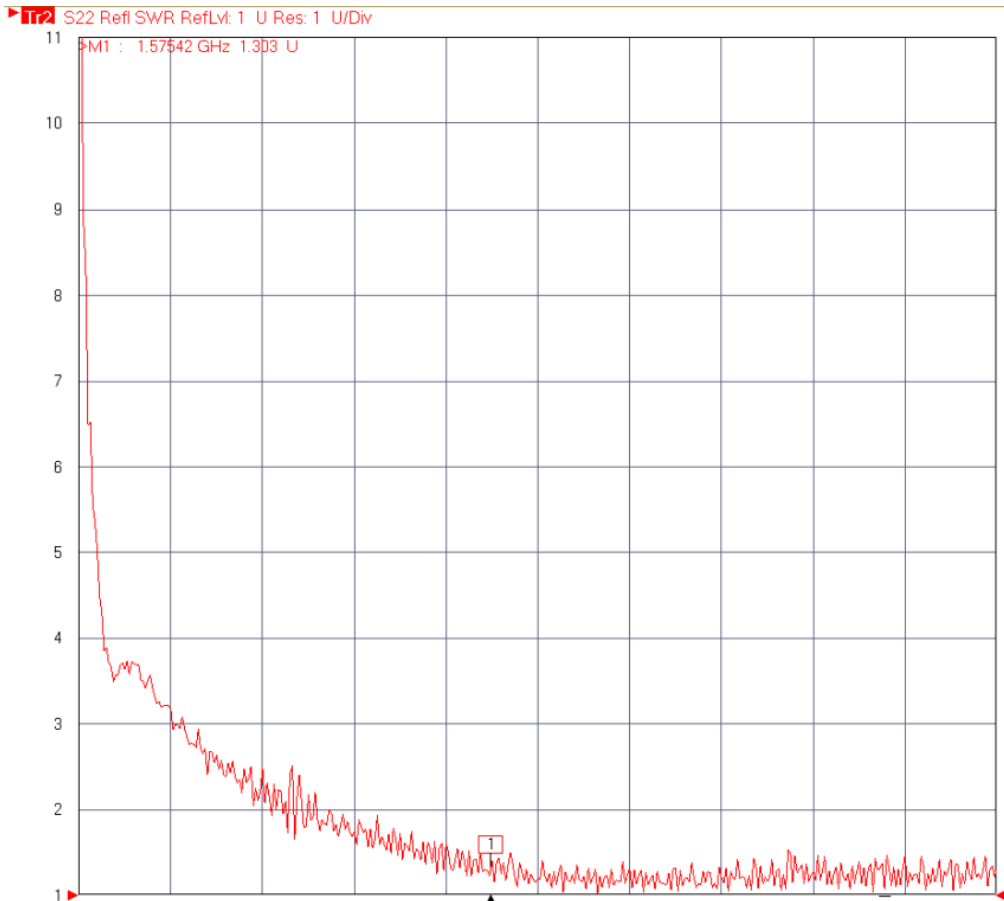
DRAWING



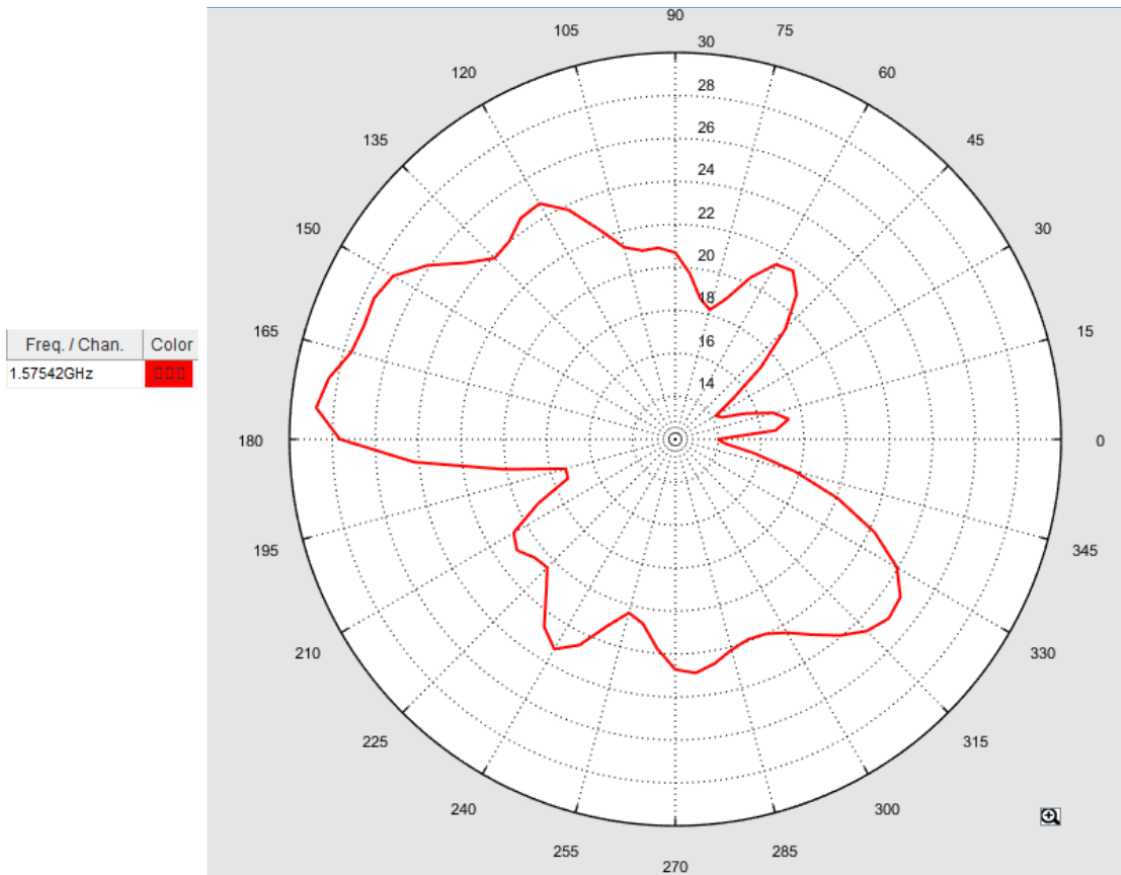
GPS S_{11} - Return Loss [dB]



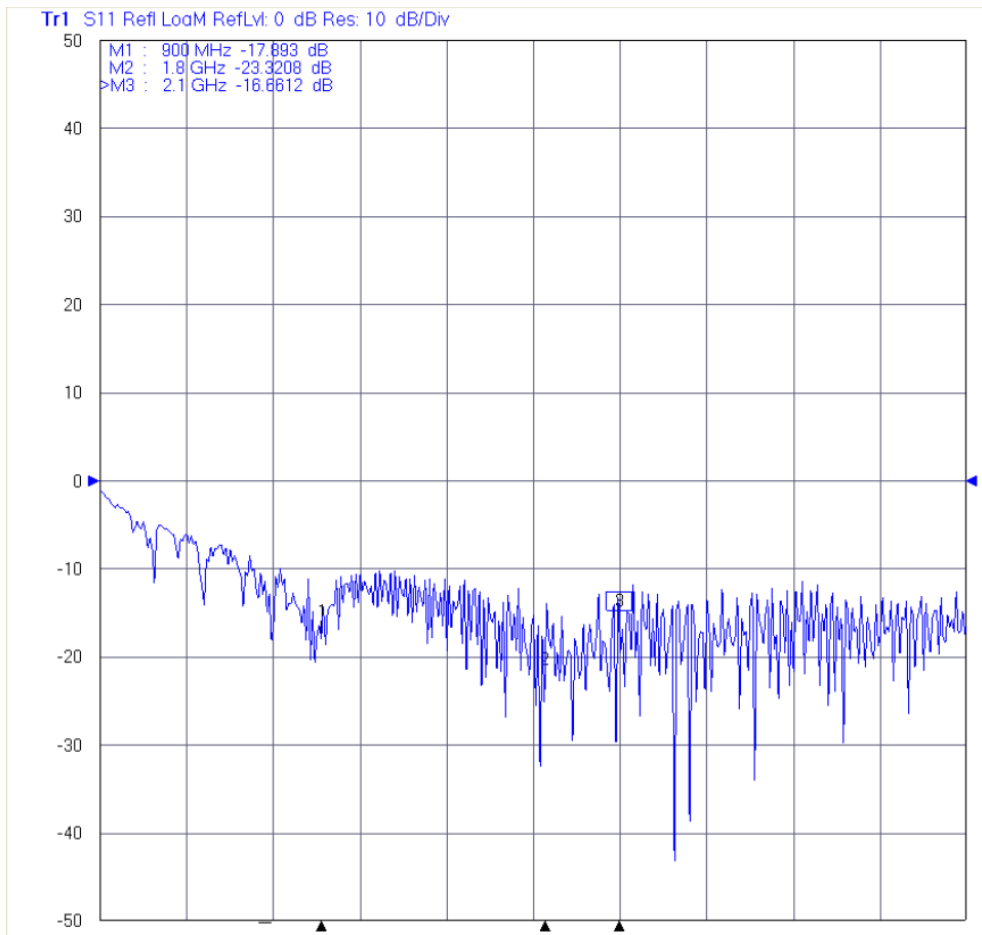
GPS VSWR – Voltage standing wave ratio [-]



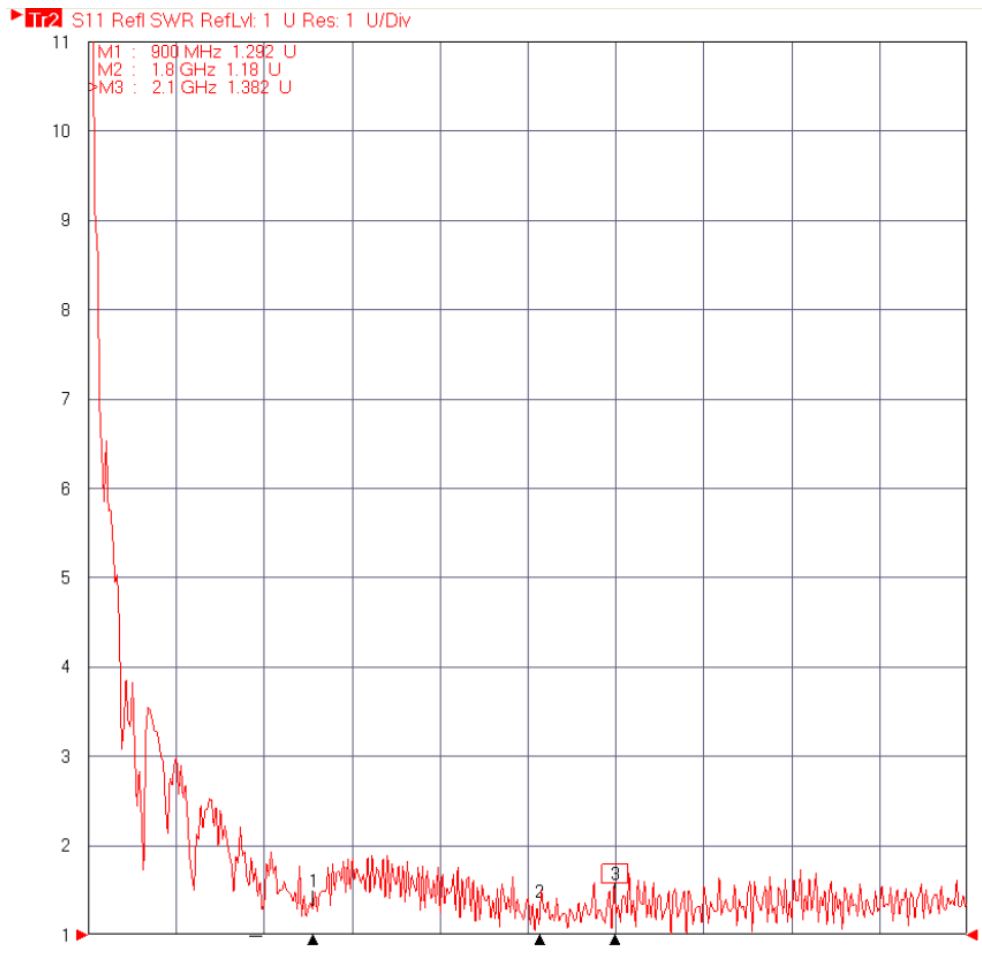
GPS 2D radiation pattern



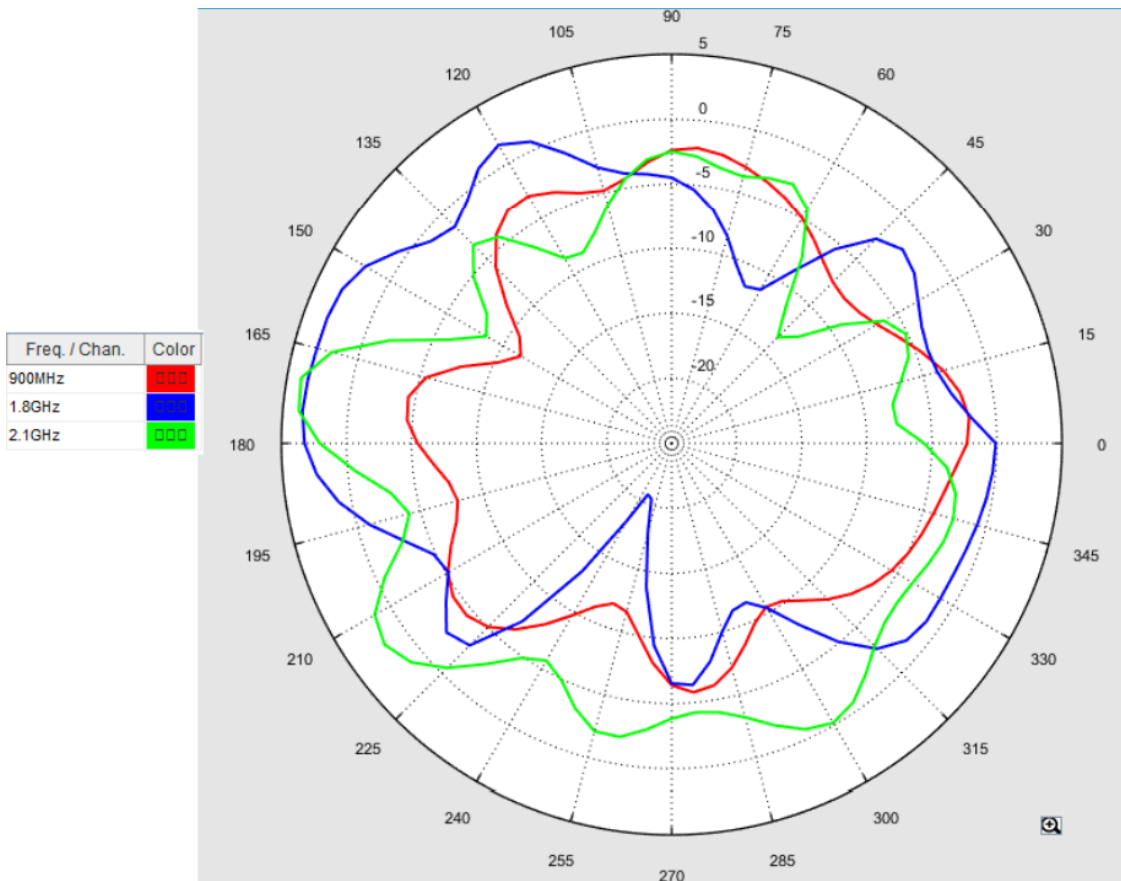
GSM S_{11} - Return Loss [dB]



GSM VSWR – Voltage standing wave ratio [-]



GSM 2D radiation pattern



Different connector variants or cable lengths are available on request.

CONTACTS

SECTRON s.r.o. Josefa Šavla 1271/12
709 00 Ostrava 9, Czech Republic

WWW.SECTRON.CZ
Tel.: +420 556 621 020