



LTE ANTENNA

Antenna LTE FLAT Stick 90°/180°,
698-2700MHz, 3 dBi, SMA(m)

AO-ALTE-TG.30.8113

SECTRON company offers a wide portfolio of LTE antennas with various versions differing in shape, level of gain and manner of attachment. SECTRON guarantees a compatible connection between an antenna and all antenna adaptors produced by SECTRON.

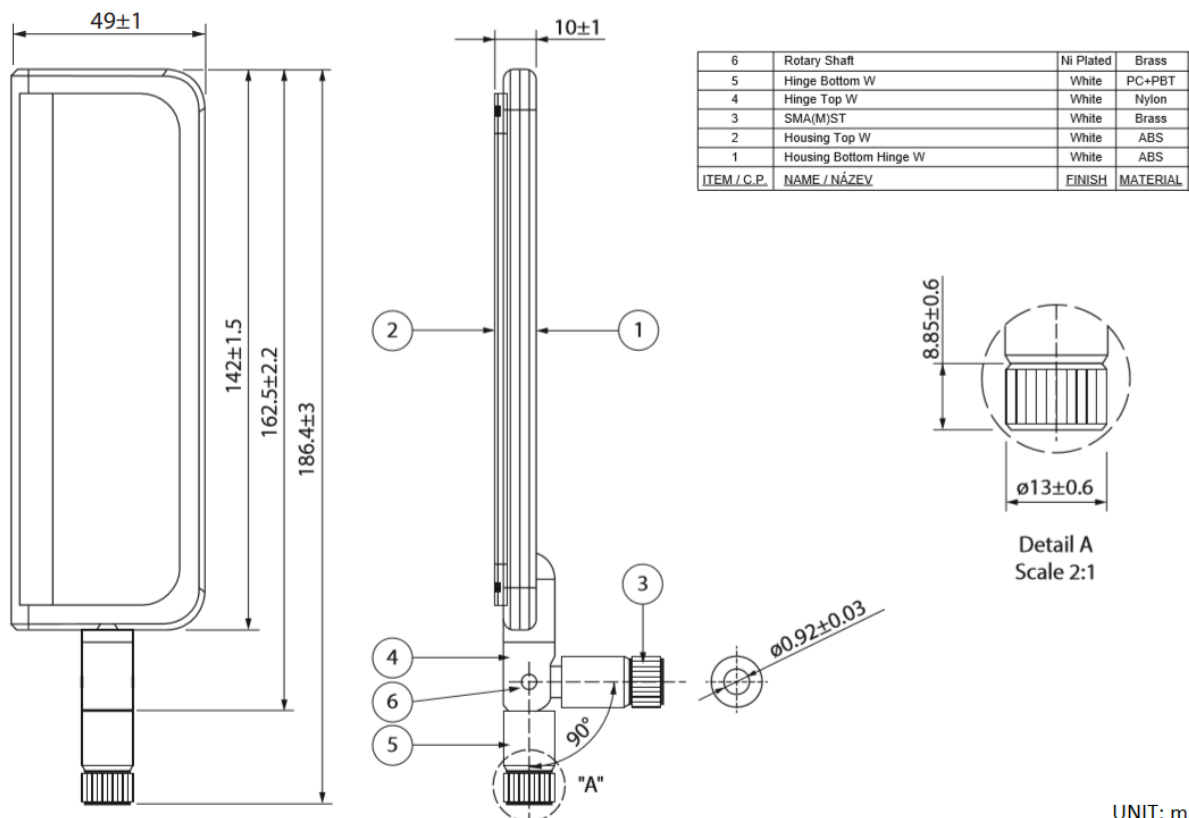


BENEFITS

- Easy installation
- Multiple technologies
- Wide frequency range
- Adjustable angle

| | |
|-----------------------|---|
| Technology | LTE/GSM/UMTS/CDMA/WiFi |
| Frequency bands | 700/800/900/1700/1800/1900/2000/2400/2700 MHz |
| Bandwidth | - |
| Gain | 3 dBi |
| VSWR | <2.0:1 |
| Impedance | 50 Ohm |
| Directivity | Omnidirectional |
| Beam angle | H 360° V 30° |
| Polarization | Linear |
| Maximum input power | 10 W |
| Power voltage | - |
| Dimensions | 186.4 x 49 mm |
| Weight | 248.23 g |
| Operating temperature | -40 to +85 °C |
| Execution | External |
| Method of attachment | Screw |
| Cable type | - |
| The cable length | - |
| Connector type | SMA(m) |
| Certification | RoHS |

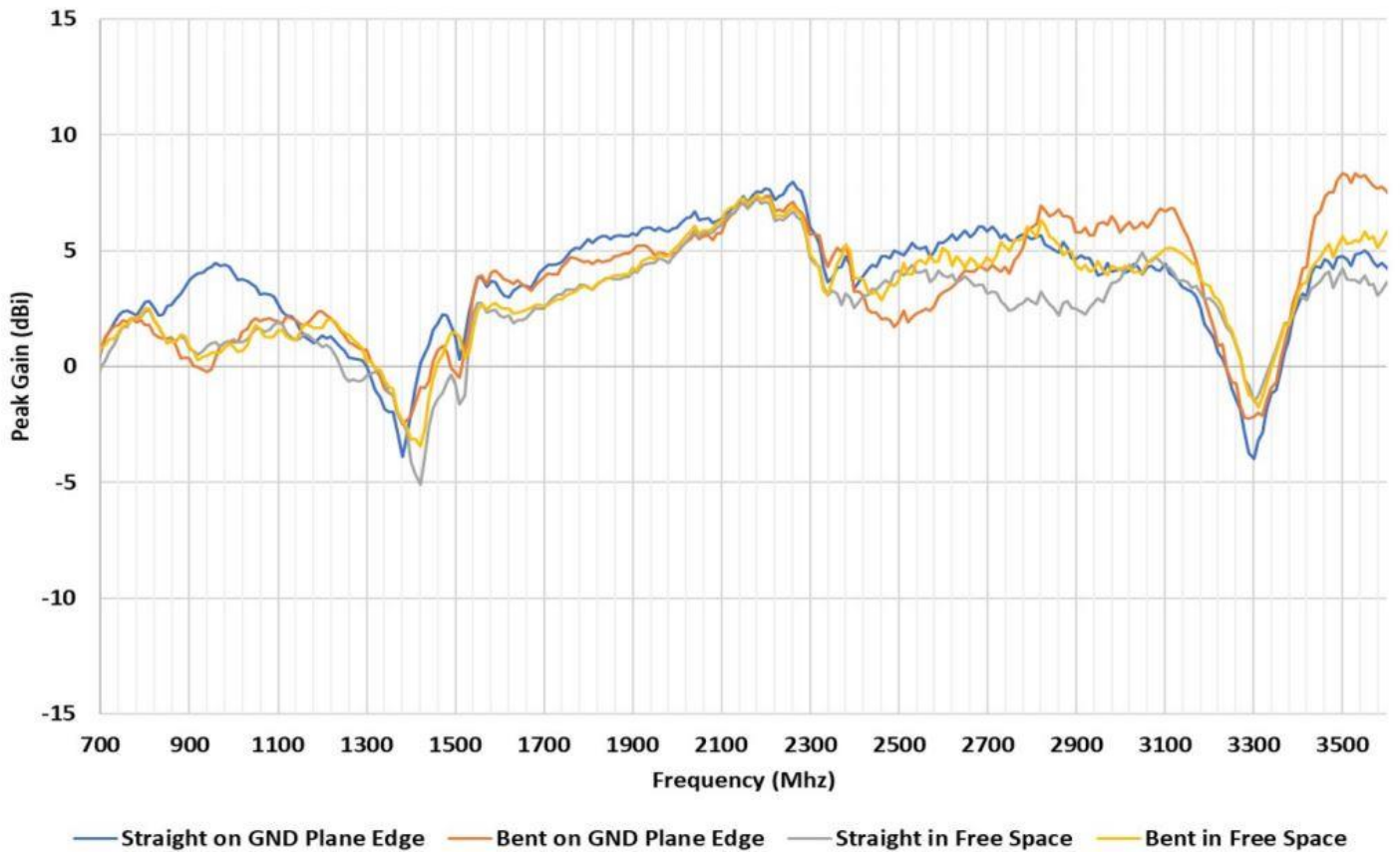
DRAWING



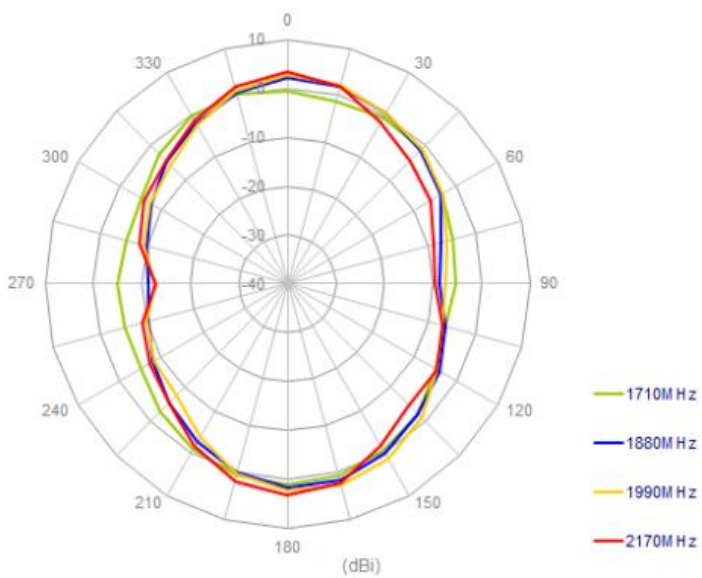
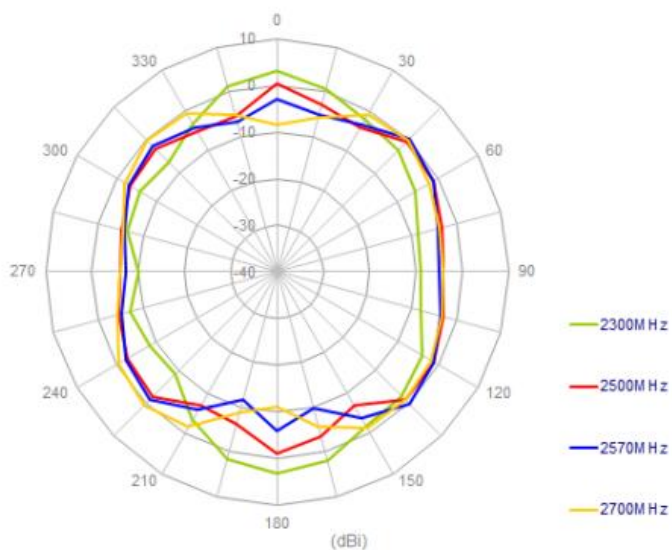
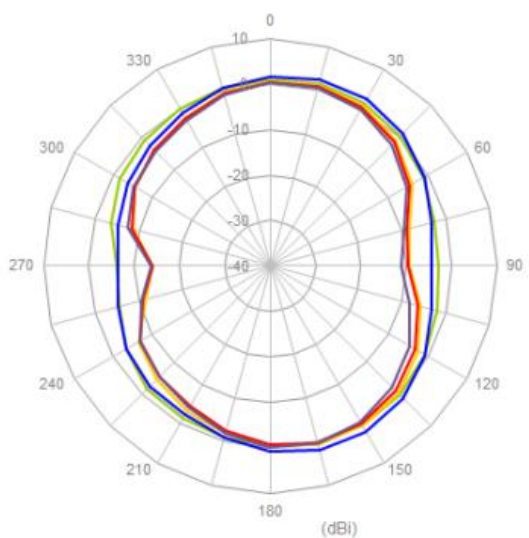
S11 – RETURN LOSS [dB]



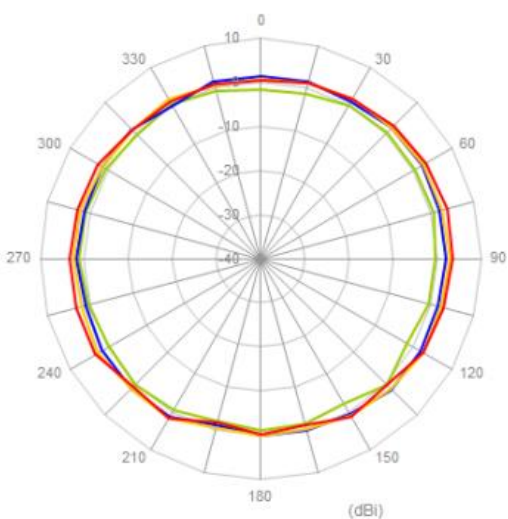
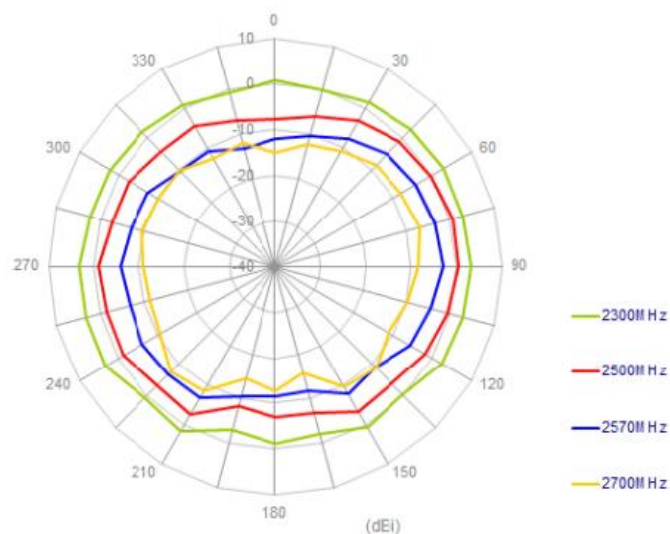
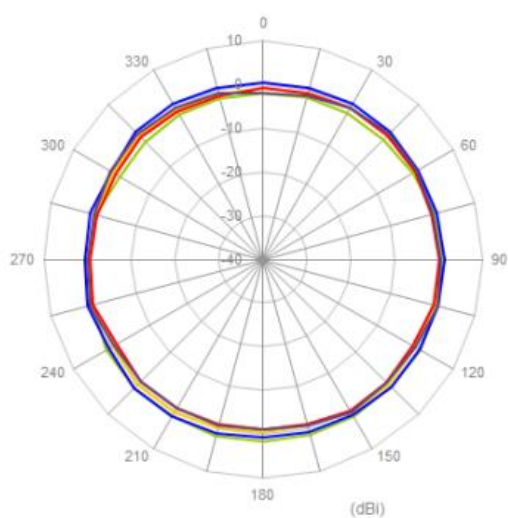
PEAK GAIN [dBi]



RADIATION PATTERN - VERTICAL



RADIATION PATTERN – HORIZONTAL



VARIANTS

Different connector variants or cable lengths are available on request.

CONTACTS